

# World Association Friends of Africa

# WAFA

*Third Edition  
2022 Annual Report*



## Malawi



Mosque



Clean Water & Sanitation



Quality Education



No Poverty

*"Committed To Fight Poverty & Illiteracy"*

**Chairman  
Message** Page 2

**Who are We?** Page 3-4

- Mission
- Vission
- Philosophy
- Our Motto

**Governance &  
Management** Page 5-7

- Board of Trustees
- Board of Directors
- Committee
  - > School & Madrassah
- Rural Projects
- ECD

**Financial  
Summary** Page 31-32

**Words of  
Thanks** Page 33-34

- Words of Appreciations
- Our Partners

**Our Works  
2022-2023** Page 8-26

- Girl Child Education
- Social Welfare Program
  - > Funeral Parlour
  - > Ramadhan
  - > Qurbani
- Women Education & Development
- Feeding Program
- Community Nutritional Support
- Rural Mosque & Madrassah
- Provision of Water & sanitation facility
- ECD Early Childhood Development  
(Nursery School)

**Appeals & Plans  
2023** Page 27-30

- Plan For Secondary School
- ECD Facilities Appeal
- WAQF Appeal Commercial Property

## MESSAGE FROM THE CHAIRMAN

All Praise is due to Allah (**SWT**) whose existence and attributes are revealed in everything that exists. He is the provider and possesses infinite power, knowledge and wisdom.

Peace and Salutations be upon our Beloved Nabi (**SAW**) who was sent as Guidance and Mercy to all mankind.

**2022** was a year of major humanitarian challenges due to global conflicts and pandemics, but our success stories in this report demonstrate the positive impact of World Association Friends of Africa (**WAF**A) in areas of education and social welfare support.

Our approach to poverty alleviation upholds to a philosophy that enables individuals to recover and maintain their dignity as befitting their status as Allah's greatest creation. That is why **WAF**A undertakes the form of human and professional support such as provision of education to the needy and the less privileged.

Provision of education empowers marginalised communities with knowledge and skills that enable them to follow different careers for future sustainable income and livelihood.

Through our Orphan and Vulnerable Girl child education, **WAF**A primary school in Zomba has enabled 33 students to pass Primary School Leaving Certificate of Education examinations (**PSLCE**) with good grades and successfully joined secondary education thus bringing positive impact to their families and fighting poverty and illiteracy.

**WAF**A has also realised its strategic plan of constructing a nursery school so as to establish and operate an Early Childhood Development Centre (**ECD**). The Nursery school objectives focus on caring, educating and empowering orphans and ultra poverty stricken households in quest of giving them a better future, and hence increasing social and economic development.

At **WAF**A, our core focus has always been around sustainability, thereby ensuring that the beneficiaries are self sufficient and making most of the projects serve as a means of sadaqatul-jaariyah for the donors.

Lastly, on behalf of the Board of Trustees, Management and Staff of **WAF**A, we extend our sincere thanks to all donors and well-wishers for their continued support financially, materially and in kind throughout the years. I humbly pray to Allah, the almighty Lord that these acts of Charity weigh heavily on your scale of righteous deeds.

Your Brother in Islam

**Altaf Gani**  
(Chairman)

## WHO ARE WE!

World Association Friends of Africa (**WAF**A) is a Charitable Non- Governmental Organisation registered in Malawi with both Council for Non-Governmental Organisations in Malawi (**CONGOMA**) and Non-Governmental Organisations Registration Authority (**NGORA**)



**WAF**A works on helping communities to achieve sustainable development through:

- Education Project
- Social Welfare Program
- Women Education
- Community nutritional support
- Early Childhood Development program (**ECD**)

At **WAF**A we are passionate of the work we do and use our varied experiences to focus on the needs of beneficiaries. Together with local committees we are transforming and empowering communities in Malawi by breaking poverty cycle and building a brighter future.



## MISSION

Our Mission is to satisfactorily raise a generation of a Muslim girl child in an Islamic environment by and through the provision of education in both Islamic and secular studies aiming at the highest possible standards.

## VISSION

Inspired by the Islamic philosophy which advocates the spirit of delivering quality education, We are dedicated to a continuing tradition of excellence in an ever changing world striving to prepare all students to become lifelong learners and responsible citizens to meet the challenges of the future under which **WAFA** pledges to become a leading national centre of education cultivating excellence in every student.

## OUR MOTTO

Education for Knowledge, Power & Honour.

## OUR PHILOSOPHY

Dedication, Transparency & Accountability.

**Wafa Chairman Altaf Gani, Trustee Member Brother Gulam Seedat and Minister of Gender, Children, Disability and Social Welfare Honourable Dr Patricia Kaliati Undergoing official Launch of Wheelchair Distribution in Zomba district (Malawi)**



## **GOVERNANCE AND MANAGEMENT**

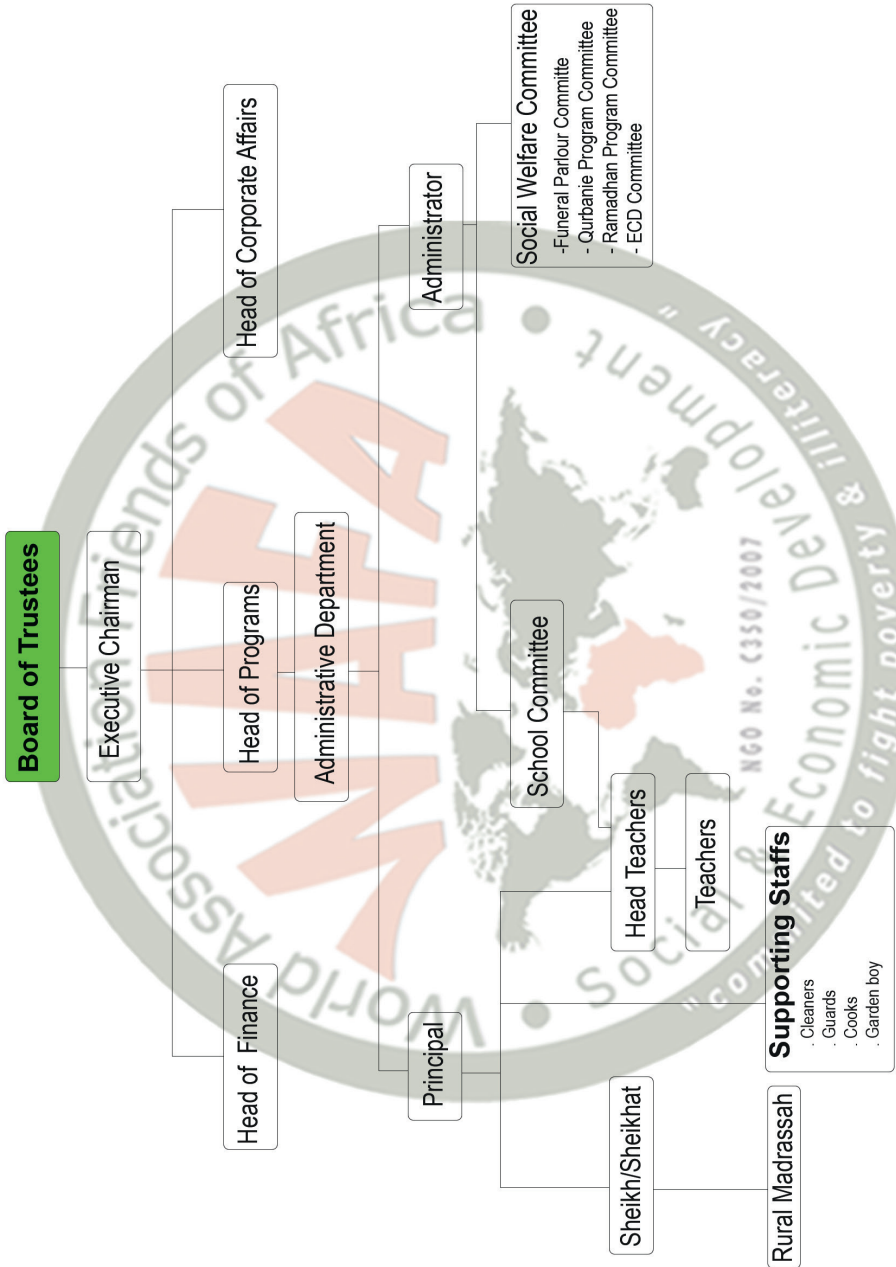
The Trustees of **Wafa** operate in accordance with the governing document of the organisation and are responsible for all matters pertaining to the governance of the organisation.

When priorities, as per the objectives of **Wafa**, are set for the year, Trustees do give careful consideration to the organisation general guidance on public benefits.

The Board of Governance has clearly defined roles, while the Board of Trustees reviews and sets the strategic goals and direction for the organisation with the Administration department led by the Chairman, Head of Finance, Head of Programs and Head of Corporate Affairs who implement the strategic plans.

**Wafa** main programs are education and social welfare. It has active committees for the school and madrassah as well as rural committees which oversee the implementation of rural projects working hand in hand with **Wafa** Administration department.

# Wafa Organogram



Trustees are appointed based on the required skills, knowledge and experience who work as volunteers. Some of the trustees perform duties of governance and management of the organisation and hold multiple roles and perform all the duties on voluntary basis.

### **SCHOOL COMMITTEE**

Board of Directors of Wafa established a school committee whose mandate is to oversee activities and issues concerning secular education.

The school committee strives to ensure that quality education is attained with no compromise of any kind.

### **FUNCTIONS AND ROLES OF THE COMMITTEE**

- Advise the Board on school matters
- Supervision of teaching and learning processes.
- Advise on recruitment of teaching staff and enrolment of students.
- Discuss and find solutions to problems affecting students and teachers .

The committee managed to meet every month in the year 2022.

### **SOME COMMITTEE MEMBERS AT SCHOOL CAMPUS**







As a gateway to secondary school and tertiary education, primary level is of paramount importance as it builds a strong academic foundation. **Wafa** offers secular and Islamic education to **194** orphaned and vulnerable girls in Zomba and Blantyre. The schools offer accommodation, meals and education in accordance with the Malawi curriculum.

With your continued support we were able to provide quality care with clear focus on intervention that provides lasting impact on the learners and ensure that Girls feel safe and loved and develop physically, emotionally and intellectually. Due to your unconditional support the 33 girls passed **MANEB** examinations with flying colours as below:



## MALAWI NATIONAL EXAMINATION BOARD GRADING SYSTEM

EXCELLENT	VERY GOOD	GOOD	AVERAGE	NEED SUPPORT
90 - 100	75 - 89	60 - 74	40-59	0 -39
A	B	C	D	F

## TOP TEN STUDENTS

NO	NAME OF STUDENTS	CHI	ENG	ARTS	MATHS	SCIE	SOC
1	JANATU SIPHATI	B	A	A	C	A	B
2	SHIRA RAJAB	B	B	A	B	A	B
3	SHAJIRA RICHARD	A	B	B	B	A	B
4	FAZIRA RAJAB	B	B	A	C	B	B
5	LAYSA MUSSAH	B	B	A	D	B	B
6	PATRICIA OMAR	B	B	B	B	B	B
7	HAJIRA ASSED	B	B	B	C	B	A
8	FATIMAH INJESI	C	B	B	D	B	B
9	WASPHER NICKSON	B	B	C	C	B	B
10	JAMILLA PATRICK	B	C	B	D	B	C

NO	NAME OF STUDENTS	CHI	ENG	ARTS	MATHS	SCIE	SOC
11	SHAHEEDA DINESI	A	C	C	D	C	C
12	HAWA YASEEN	B	C	B	C	C	C
13	SHANIRU KANDEU	B	C	C	C	C	C
14	NAOM MAKUTA	B	C	C	C	C	C
15	SIPHAT ABDURAZAQ	B	C	C	C	C	C
16	MAHABOOBA OMAR	C	C	B	C	C	C
17	SHAMIM HUSSEIN	C	C	B	D	C	C
18	SHAKIRA MUSSAH	B	C	C	D	C	C
19	TASLIM SAEED	C	C	C	C	C	C
20	ANISA JAFARI	B	C	C	C	D	D
21	SHAJIRA SAEET	C	C	C	D	C	C
22	SHAREEEFA UTHMAN	C	C	C	D	C	C
23	ELIZA ELIYASA	C	C	C	C	D	C
24	FATIMAH NADI	C	C	C	D	C	C
25	SUNAT JACKSON	B	C	D	D	D	C
26	SHAMIM IDRISAH	C	D	C	D	C	C
27	SHAKIRA YAHAYA	C	C	C	D	C	D
28	HAFSWA MAPIRA	B	C	D	D	D	D
29	JAMILLA KAISI	C	D	C	D	C	D
30	FAREEDAH MUSSAH	C	D	C	D	D	D
31	JAZILLA MUSSAH	C	C	C	F	D	C
32	RASHIDA MPALUME	C	D	D	D	D	D
33	SHAMILA ABDULLAH	C	D	D	F	D	D
34	ZAINAB SAEED	C	F	D	D	D	D

Girl Child Education is one of the major programs **WAF** operates. With your generous support, **WAF** increased enrolment of students and now accomo-  
dates 192 students. To ensure that students attain quality education in good  
condition and conducive environment. **WAF** purchased new mattresses, bed-  
dings and students' uniforms. Thanks to the generosity of our sponsors that we  
are able to provide these children with enough learning materials and nutritious  
meals to keep them healthy and energetic.

### **WAF** Students reading Qur'an in class



### **WAF** Boarding Facilities



## EARLY CHILDHOOD DEVELOPMENT CENTRE (ECD)

### 02 ECD PROGRAM





Early Childhood Development (**ECD**) services have all along been neglected, a development that has potential to negatively affect attainment of national development goals.

A child's early years of life are the foundation for his/her future physical and mental development. The purpose of **ECD** is to provide children with physical and mental capabilities that would help them develop emotionally, socially and acquire cognitive skills needed to become reliable citizens and lifelong learners.

**Wafa** believes that every child has the right to live a decent life possible and that every family should be supported to enable their children to reach their full potential especially those in deprived areas. This can be achieved through early intervention of child care and provision of family services.

A day in the life of an **ECD** child includes breakfast, cognitive activities like puzzles and general care.

Your generous contribution to the establishment and running of this centre has given children their basic right - the right to learn.

Without your support for this project many children could not have gotten the access to quality **ECD** education and nutritious breakfast meals.

GROUP	AGE	TIME
Group A	3 Years	07:30 AM - 10:30 AM
Group B	4 Years	11:00 AM - 01:00 AM
Group C	5 Years	02:00 PM - 04:30 PM



## OUR APPEAL

If you are passionate about helping more kids to ensure that they are equipped with the necessary knowledge and are intellectually assisted so as to shape for them a bright future, support this noble cause by funding for new **ECD** centres and/or provision of meals.



# ECD/NURSERY SCHOOL FEEDING PROGRAM APPEAL

Feeding Program has been a proved way to increase daily attendance as well as nutritional value of Learners. To ensure that students get the most we appeal for your support to enable us provide nutritious meals



**FEED 99 STUDENTS**

Per day	K14,750
Per week	K88,500
Per month	K383,200

We provide porridge made from Maize, Soya, Groundnuts & Rice and bananas every day

**One of The Best Form of charity is to feed others**

**For More Information Contact:**

**Altaf Gani on the following details:**

Call or WhatsApp +265 (0) 889 821 955

Email: [safari@globemw.net](mailto:safari@globemw.net)/[wafaheadoffice@gmail.com](mailto:wafaheadoffice@gmail.com)

### **Account Details**

**Account Name:** World Association Friends of Africa

**Bank Name:** National Bank of Malawi. **Account Number:** 674915

**Branch:** Chichiri, Blantyre. **Swift Code:** NBMAMWMW003



### 03 WOMEN MADRASSAH



World Association Friends of Africa recognizes the role women play in social and economic development of any society. Following the beautiful saying of the last and final messenger of Allah the noble Prophet Muhammad peace and blessings be upon him:

“If a woman is educated, then the whole nation becomes educated”.

Unfortunately, due to other factors and challenges most women fail to attain both Islamic and Secular education.

It is in view of this that **WAF**A has set up a special class to offer Islamic education to women whose enrolment comes up to **200** female learners drawn from the vicinity of **WAF**A Head Office in Zomba. Women are taught Qur'an, Hadith, Fiqh and Duaas. This has gone a long way to bring Islamic knowledge to Muslim homes and has greatly contributed to good upbringing of children in the society.

**WAF**A will extend these lessons to also impart knowledge on basic financial and numeracy skills and start supporting the women in various programs.

## RAMADHAN PROGRAM

The Ramadhan food distribution program is one of the most important projects World Association Friends of Africa (**WAF**A) carries out annually.

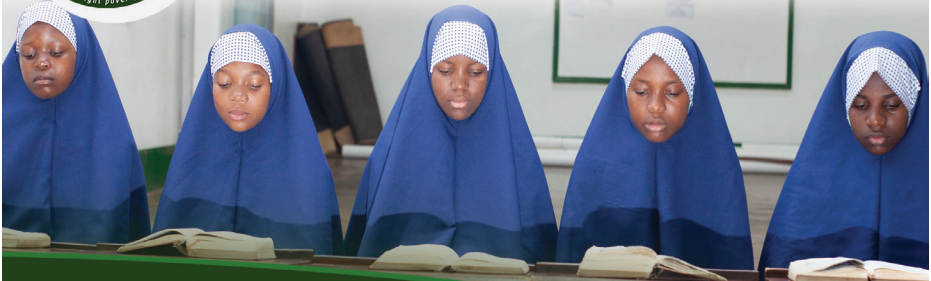
During Ramadhan, We carry out feeding programs and these include Iftar meals and food parcel distribution to needy families. We also distribute Eid gifts to orphans, needy children and poor families





# **RAMADHAN 2022/1443AH**

## **APPEAL FOR ORPHAN GIRL CHILD SECULAR & RELIGIOUS EDUCATION**



Please Support Orphan girl child education by donating  
Zakat, Sadaqah and lillah are accepted.

Hadith: When a person dies, all their deeds end except three: a Continuing charity, Beneficial knowledge & a Child who prays for them” (Muslim).

**All funds are to be used for educating  
& caring orphans girls**

**For More Information Contact:**

**Rafik Sacranie on the following details:**

Call or WhatsApp 07 816 786 007 Email: rafiksacranie@gmail.com

Website: wafacharitymalawi.com

**Global Welfare Relief**

Reg Charity No: 1170887,

Account Type: Business Account No. 33712512 (Sort Code 23 05 80)

**For Payments Outside the UK**

SWIFT/BICC: MYMBGB2L BAN: GB79MYMB23058033712512

**GIFT AID FORM AVAILABLE**

## QURBANIE PROGRAM

To many Malawian Muslim families a meal consisting of meat is considered as a state of rare great comfort and luxurious. For many years now **WAFA** has been slaughtering goats, cattle and sheep under strict shariah supervision and have their meat distributed to poor families in the Eastern and Southern region of Malawi.



# Qurbani 1443 A.H 2022



## Malawi Goat Cow

£35.00

£260.00

*Follow the Sunnah of  
Ibrahim Alyhis Salam.*

It is not  
their meat nor their  
blood, that reaches Allah;  
It is your piety that reach him.  
He has thus made them  
subject to you, that you may  
glorify Allah for his guidance  
to you. *Qur'an 22:37*



- Goats counts as 1 share
- Cow counts as 7 shares

*Let Your Qurbani not only  
feed the needy but also  
benefit the local economy*



### For More Information Contact:

**Rafik Sacranie on the following details:**  
Call or WhatsApp 07 816 786 007 Email: rafiksacranie@gmail.com  
Website: wafacharitymalawi.com

### Global Welfare Relief

Account Type: Business Account No. 33712512 (Sort Code 23 05 80)

### For Payments From Outside the UK

SWIFT/BICC: MYMBGB2L BAN: GB79MYMB23058033712512

Reg Charity No: 1170887, GIFT AID FORM AVAILABLE



## FUNERAL PARLOUR SERVICES

“A FREE SERVICE TO HUMANITY”

**Wafa** recognises the social and economic challenges that most people go through especially during funerals. Death comes at a time when no one expects it. Logistics and burial issues are unavoidable.

**Wafa** constructed a funeral parlour to provide free Islamic funeral services and care in the Eastern region of the country. The facility was officially open in October, 2020.

The parlour provides services ranging from **Ghusl (bathing)** and shrouding of the dead body as well as free transport from the hospital to the facility and to their respective homes.

The service has proved to be a good funeral cover for the Muslim community during the time of grief. It serves not only the bereaved family but also provides a proper burial procedure under the Islamic teachings to the mayyit (The dead body).

This free service has reached **78 families in the year 2022** representing 1 person in every week of the year. The community greatly benefits through provision of free transportation from the hospital to the facility at **Wafa** campus, and, thereafter, to their respective homes for burial. The facility also provides Kaffan (The white shrouding cloth).

Since opening its doors in the year 2020 the facility has benefitted around 182 families.

## RURAL COMMUNITY NUTRITIONAL PROGRAM

Charity is such a very important aspect of the teachings of Islam. **Wafa** empowers rural communities by enabling them to raise livestock such as goats and cattle which are later slaughtered and the meat is distributed to members of the communities themselves. Your Animal sacrifice in a form of sadaqah benefits the communities economically and nutritionally. **Wafa** distributes around 200 goats and 5 cows monthly.



**Wafa** also carries out annual Qurban programs in the month of Dhul-Hijjah. Through its donors, **Wafa** provides meat to the communities and also supports and encourages communities to raise animals which **Wafa** purchases in a bid to supporting them economically. Each year about **700** goats and **200** cows are slaughtered during the Qurban program.



# ANIMAL SADAQAH APPEAL MALAWI AFRICA

Let Your Sadaqah feed Orphan Girls  
Madrassah & Needy Families in Malawi

**Goat**

**£40.00**

Goat Count as 1  
Share

FOLLOW  
THE  
SUNNAH  
OF  
IBRAHIM  
ALYHIS  
SALAM

**Cow**

**£225.00**

Cow Counts as 7  
Shares

It is not  
their meat nor their  
blood, that reaches Allah;  
It is your piety that reach him. He  
has thus made them  
subject to you, that you may  
glorify Allah for his guidance to  
you. *Qur'an 22:37*



**For More Infor Contact:**

**Rafik Sacranie on the following details:**

Call or WhatsApp 07 816 786 007 Email: rafiksacranie@gmail.com

Website: www.wafacharitymalawi.com

**Global Welfare Relief**

Reg Charity No: 1170887

Account Type: Business Account No: 33712512 (Sort Code: 23 05 80)

SWIFT/BICC: MYMBGB2L BAN: GB79MYMB23058033712512

**GIFT AID FORM AVAILABLE**



## **SOCIAL WELFARE PROGRAM**

WAFA provides support to local communities through the following.

### **Solar Powered Water System**



**KOLE VILLAGE (ZOMBA DISTRICT)**



**CHIWELE VILLAGE (ZOMBA DISTRICT)**

Village Name: Kole Village TA Kuntumanje Zomba

## 2. Madrassah block

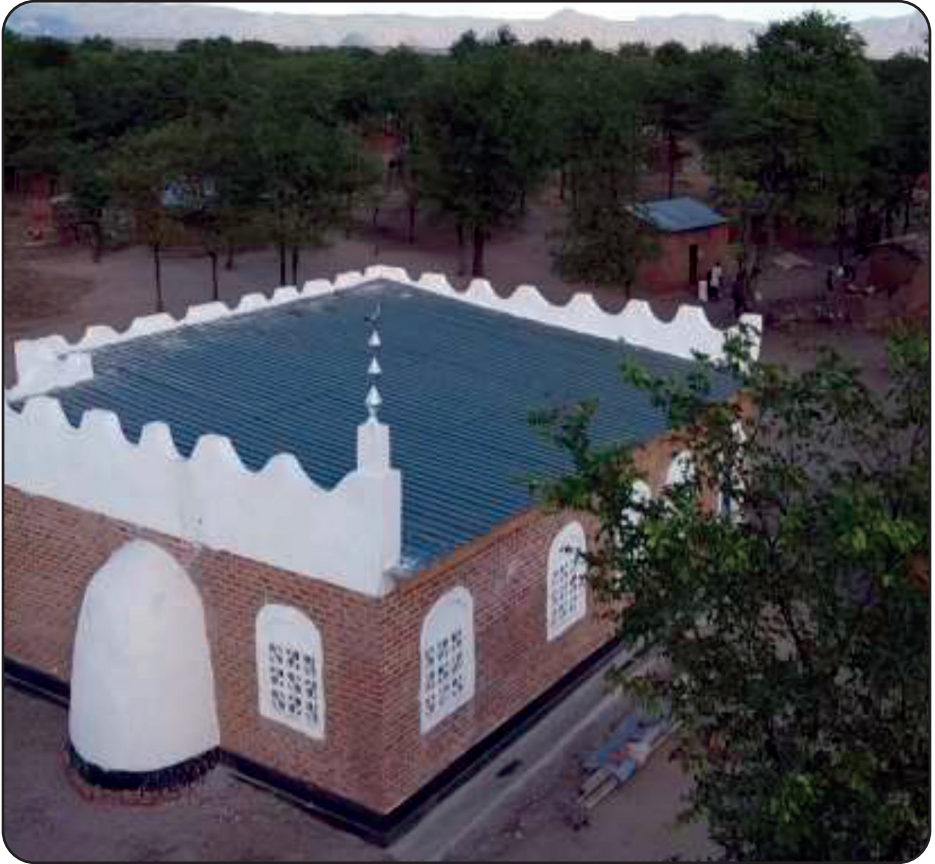


## 3. Mosque

Chipini Village (Zomba District)



## Chiwele Village ( Zomba District)



### THE ABOVE MENTIONED PROJECTS HAVE THE FOLLOWING IMPACTS:

- The communities are being provided with potable water for drinking and household usage.
- Reduced distance to fetch water.
- Madrassah block where Islamic lessons are being offered contribute to an upright society and help to eradicate moral decay.
- Masjids are meeting places for local community where sometimes developmental meetings are held.

## PLAN FOR SECONDARY SCHOOL

During the 2022 MANEB results despite scoring remarkable good performance by the students, the Ministry of Education through the District Education Manager did not offer secondary school selection for our students to various Government Schools.

Our students wrote the Primary School Leaving Certificate Examinations as external candidates at one of the Government schools and that reduced their chances to get selected to public institutions. This has compelled us to embark on getting our own centre number, however, selection shall still be not impressive as only few students will be picked due to capacity and limited number of government owned secondary schools.

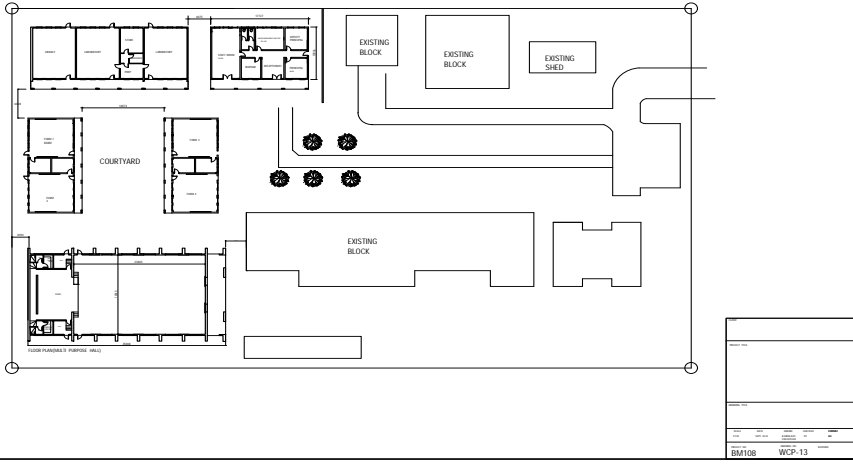
To solve the problem **Wafa** plans to embark on a project of constructing its own secondary school.

Al hamdulillah the Board of Trustees has this ambitious plan which is a mammoth task and would certainly require substantial source of funding.

### **The plan includes the following:**

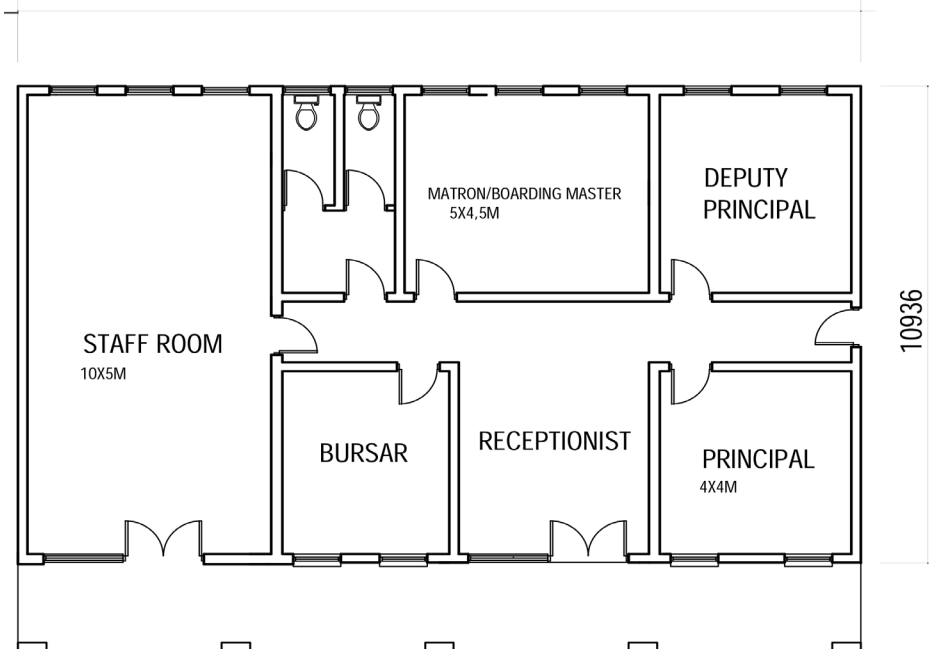
- Administrative blocks which include a Staffroom, Principal's Office, Headmaster's Office and the Accounts department.
- Classroom section which will have four classes covering Forms 1 to 4 and each class will accommodate 35 students.
- Science and Agriculture Laboratory and Computer Laboratory

# SITE PLAN FOR Wafa Showing a Proposed Secondary School.



## ADMINISTRATIVE BLOCK

17727



It is absolutely imperative that children be exposed to computers since technology has reached such a level that knowledge of this field has become an absolute necessity. The laboratory will help students to learn hands on and practice computing modules freely. It also includes biology and other sciences. There will be a multi-purpose hall that will provide in-house facilities and serve as an examination room as would be required from time to time.

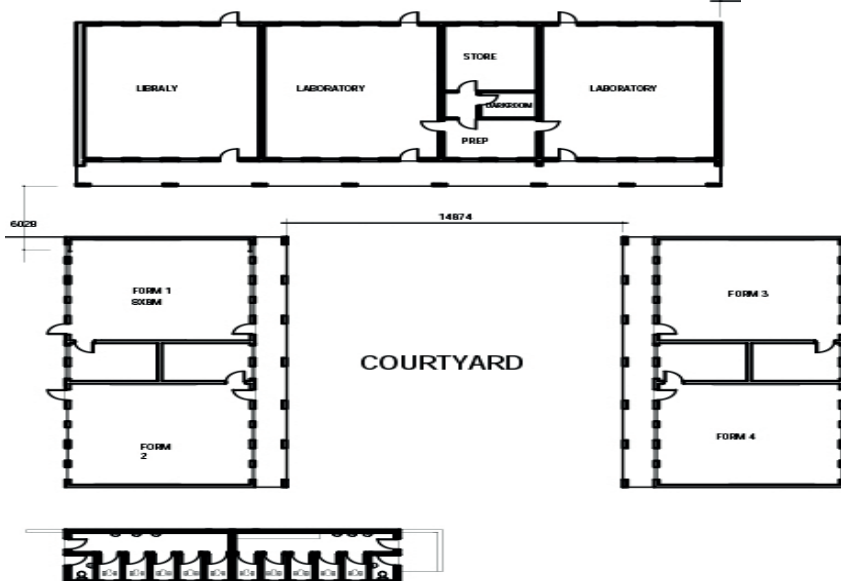
## APPEAL

We are appealing to you respected donors and well-wishers to generously contribute to the construction of this new education facility. We humbly ask you to kindly give and spend for the sake of Allah who certainly in return will abundantly reward you in the Hereafter with the best reward.

“Those who (in charity) spend of their goods by night and by day, in secret and in public, have their reward with their Lord, on them shall be no fear, nor shall they grieve.” Qur’an 2.274

Contribute in kind or monetary for this noble course. For knowledge is acquired and imparted to others solely for the pleasure of Allah and for the upliftment and welfare of society.

## LABORATORIES & CLASSROOM SECTION





# WAQF DONATION APPEAL

**WAFa** Appeals For Your Financial Support to put up Commercial Buildings to Sustain An Orphan Girl Child Madrassah & School in Zomba & Blantyre.



*Building on the importance of Zakat as a Pillar of Islam and the need to give Charity, **WAQF** is considered as Sadaqah Jariah. The prophet said ' when a person dies all their deeds end except three, a continuing charity, beneficial knowledge and a child who prays for them (Muslim). WAQF investment are important part of islam and many examples are found in Islamic history*

## **For More Infor Contact:**

**Rafik Sacranie on the following details:**

Call or WhatsApp 07 816 786 007 **Email:** rafiksacranie@gmail.com

**Website:** www.wafacharitymalawi.com

**Global Welfare Relief**

**Reg Charity No:** 1170887

**Account Type:** Business **Account No:** 33712512 (Sort Code: 23 05 80)

**SWIFT/BICC:** MYMBGB2L **BAN:** GB79MYMB23058033712512

**GIFT AID FORM AVAILABLE**

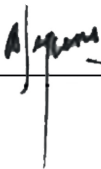
## 2022 Wafa STATEMENT OF FINANCIAL POSITION


### WORLD ASSOCIATION FRIENDS OF AFRICA

#### STATEMENT OF FINANCIAL POSITION AS AT 31 DECEMBER 2022

	2022 K '000	2021 K '000
<b>ASSETS</b>		
<b>Non current assets</b>		
Property, plant and equipment	<u>527,990</u>	<u>338,289</u>
<b>Total non current assets</b>	<u>527,990</u>	<u>338,289</u>
<b>Current assets</b>		
Cash and cash equivalents	<u>39,668</u>	<u>37,157</u>
<b>Total current assets</b>	<u>39,668</u>	<u>37,157</u>
<b>Total assets</b>	<u><u>567,658</u></u>	<u><u>375,445</u></u>
<b>EQUITY AND LIABILITIES</b>		
<b>Capital and reserves</b>		
Revenue reserve	<u>472,277</u>	<u>279,921</u>
	472,277	279,921
<b>Non current liabilities</b>		
Restricted funds	<u>95,001</u>	<u>95,000</u>
	95,001	95,000
<b>Current liabilities</b>		
Accounts payables	<u>381</u>	<u>525</u>
<b>Total current liabilities</b>	<u>381</u>	<u>525</u>
<b>Total equity and liabilities</b>	<u><u>567,658</u></u>	<u><u>375,445</u></u>

The financial statements were authorised for issue by the Board of Directors on  
28 February 2023 and signed on its behalf by :

  
 \_\_\_\_\_  
 Chairman

  
 \_\_\_\_\_  
 Trustee



## 2022 STATEMENT OF INCOME AND EXPENDITURE

### WORLD ASSOCIATION FRIENDS OF AFRICA

#### STATEMENT OF INCOME AND EXPENDITURE FOR THE YEAR ENDED 31 DECEMBER 2022

	2022 MK'000	2021 MK'000
<b>Revenue</b>		
Donations received	446,928	375,132
Rent received	-	-
Other income	-	-
<b>Total revenue</b>	<u>446,928</u>	<u>375,132</u>
Project expenses	(140,622)	(170,354)
Administration expenses	<u>(113,950)</u>	<u>(99,551)</u>
<b>(Deficit)/ Surplus for the year</b>	<u><u>192,356</u></u>	<u><u>105,227</u></u>

Dear Local and International Donors,

On behalf of Trustees, Management and Staff of WAFA we would like to express our heartfelt gratitude for your generosity evidenced in your donations annually and your commitment for orphan girl child education. Surely, it really makes a big difference for the next generation of our society.

This is a clear testimony that your unconditional donation plays a vital role to assisting the girls we serve and educate who are orphaned. Your ongoing commitment to assisting the orphans truly means the world, and we really could not do it without your support.

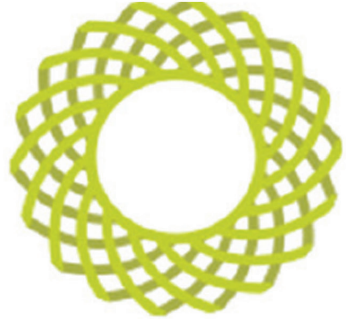
With your help, we have provided after school care to 194 girls. They are building healthy relationships, improving their grades, and having a great time at our centre. Together we are bringing in sustainable solutions to needy and orphan girls through your support of Orphan Girl child education.

Once again, we say thank you for your ongoing support of our orphan Girl Child.

May Allah accept from us and from you.

Trustees and Management

## OUR INTERNATIONAL PARTNERS



**teebah**  
Foundation



**Global  
Poverty Relief**  
*Creating happy hearts*



**HUMANITARIAN**

We believe in working together and in partnership in order to achieve the desired objectives.

We develop partnerships with community based organisations, NGOs, Government Institutions and Ministries in our working areas. We also develop working relationships with

International Organisations that accord us with the opportunity to maximise the positive impact of reaching the vulnerable communities during Ramadhan and Qurban with Iftar food packs and meat distribution respectively.

## ACCOUNT DETAILS

<b>Account Name</b>	World Association Friends of Africa
<b>Bank Name</b>	National Bank Of Malawi
<b>Account Number</b>	6 7 4 9 1 5
<b>Branch</b>	Chichiri, Blantyre
<b>Swift Code</b>	NBMAMWMW003
<b>Special Bank Routing Institution</b>	NBMAWMWXXX

## FCDA USD ACCOUNT

<b>Account Name</b>	World Association Friends of Africa
<b>Type of Account</b>	FCDA USD
<b>Account Number</b>	1005698932
<b>Branch</b>	Top Mandala , Blantyre
<b>Swift Code</b>	NBMAMWMMWO18
<b>Special Bank Routing Institution</b>	NBMAMWMWXXXS

## CONTACT DETAILS

World Association Friends of Africa (Wafa)

P. O Box 403

Zomba,

Malawi

Email: [wafaheadoffice@gmail.com](mailto:wafaheadoffice@gmail.com)

Website: [www.wafacharitymalawi.com](http://www.wafacharitymalawi.com)

Contact Numbers: +265 (0) 884 099 422/ 889 821 955